

STELLA BY STARLIGHT

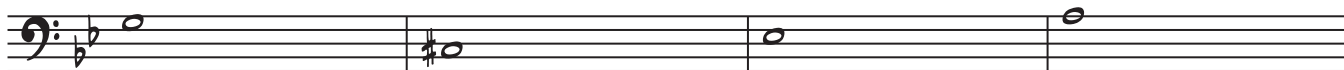
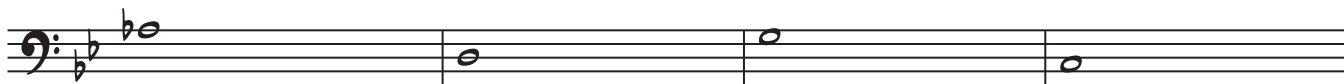
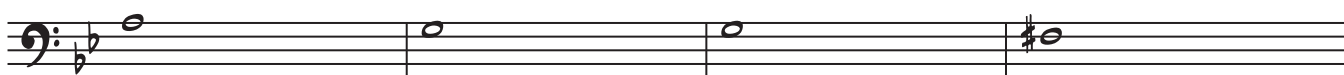
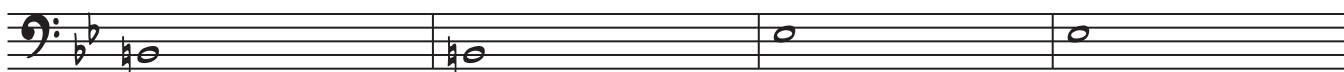
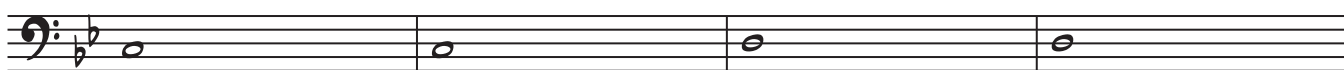
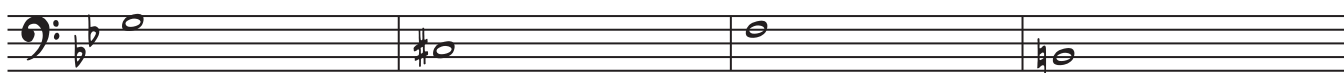
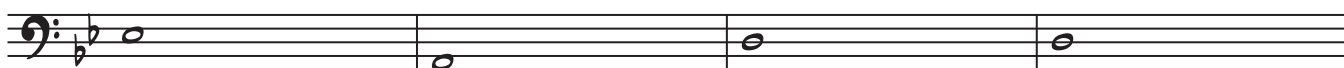
1

Emin^{7(b5)}A^{7(b9)}Cmin⁷F⁷Fmin⁷B^{b7}E^bmaj⁷A^{b7}B^bmaj⁷Emin^{7(b5)} A^{7(b9)}Dmin⁷B^bmin⁷ E^{b7}Fmaj⁷Emin⁷E^bmaj^{7(#11)}D^{7(b9)}G^{7(b13)}Cmin⁷A^{b7(#11)}B^bmaj⁷Emin^{7(b5)}A^{7(b9)}Dmin^{7(b5)}G^{7(b9)}Cmin^{7(b5)}F^{7(b9)}B^bmaj⁷

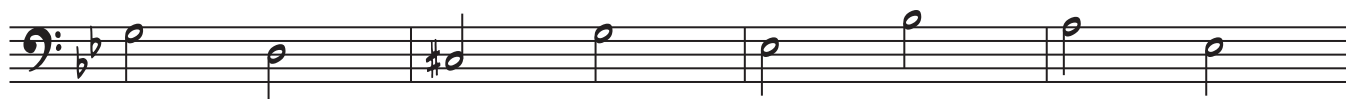
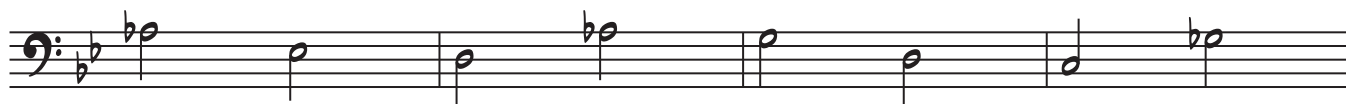
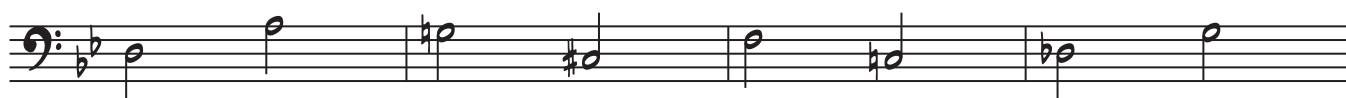
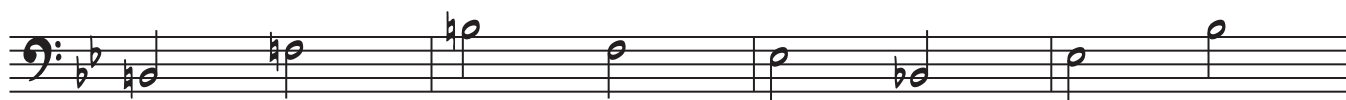
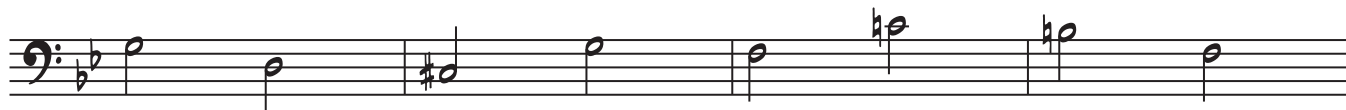
2

Emin^{7(b5)}A^{7(b9)}Cmin⁷F⁷Fmin⁷B^{b7}E^bmaj⁷A^{b7}B^bmaj⁷Emin^{7(b5)} A^{7(b9)}Dmin⁷B^bmin⁷E^{b7}Fmaj⁷Emin⁷E^bmaj^{7(#11)}D^{7(b9)}G^{7(b13)}Cmin⁷A^{b7(#11)}B^bmaj⁷Emin^{7(b5)}A^{7(b9)}Dmin^{7(b5)}G^{7(b9)}Cmin^{7(b5)}F^{7(b9)}B^bmaj⁷

4

Emin^{7(b5)}A^{7(b9)}Cmin⁷F⁷Fmin⁷B^{b7}E^bmaj⁷A^{b7}B^bmaj⁷Emin^{7(b5)} A^{7(b9)}Dmin⁷B^bmin⁷E^{b7}Fmaj⁷Emin⁷E^bmaj^{7(#11)}D^{7(b9)}G^{7(b13)}Cmin⁷A^{b7(#11)}B^bmaj⁷Emin^{7(b5)}A^{7(b9)}Dmin^{7(b5)}G^{7(b9)}Cmin^{7(b5)}F^{7(b9)}B^bmaj⁷

5

Emin^{7(b5)}A^{7(b9)}Cmin⁷F⁷Fmin⁷B^{b7}E^bmaj⁷A^{b7}B^bmaj⁷Emin^{7(b5)} A^{7(b9)}Dmin⁷B^bmin⁷E^{b7}Fmaj⁷Emin⁷E^bmaj^{7(#11)}D^{7(b9)}G^{7(b13)}Cmin⁷A^{b7(#11)}B^bmaj⁷Emin^{7(b5)}A^{7(b9)}Dmin^{7(b5)}G^{7(b9)}Cmin^{7(b5)}F^{7(b9)}B^bmaj⁷

Emin^{7(b5)} A7(b9) Cmin⁷ F7


Fmin⁷ B^{b7} E^bmaj⁷ A^{b7}



A handwritten musical score for the bass line of 'The Girl on the Train'. The notation is on a single staff with a bass clef and a key signature of two flats (Bb and Eb). The melody consists of eighth and quarter notes, with some beamed eighth notes. Above the staff, four chords are written in handwritten text: Fmin⁷, B^{b7}, E^bmaj⁷, and A^{b7}. The piece ends with a double bar line and a repeat sign.

B^bmaj⁷ E min⁷(b⁹) A⁷(b⁹) D min⁷ B^b min⁷ E^b7

Fmaj7 Emin7 E^bmaj7(♯11) D7(b9)

[illegible]

Emin 7(b5) A7(b9) Dmin 7(b5) G7(b9)



Cmin^{7(b5)} F^{7(b9)} B^bmaj⁷

