

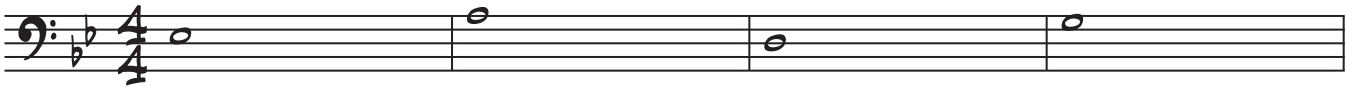
AUTUMN LEAVES - JAZZ ETUDE

Cmin

F7

B^bmaj7

E^bmaj7

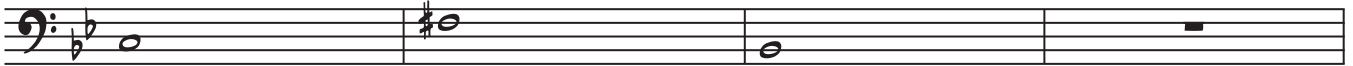


Amin^{7(b5)}

D7

Gmin⁶

Gmin⁶

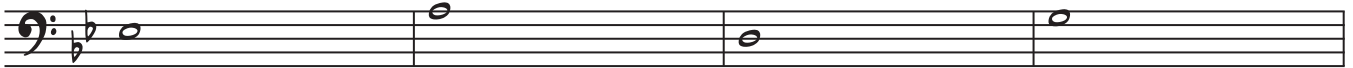


Cmin

F7

B^bmaj7

E^bmaj7

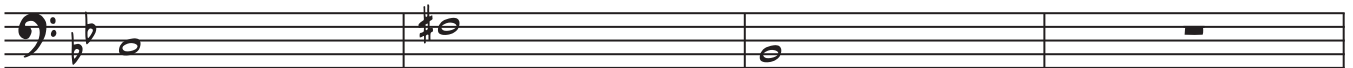


Amin^{7(b5)}

D7

Gmin⁶

Gmin⁶

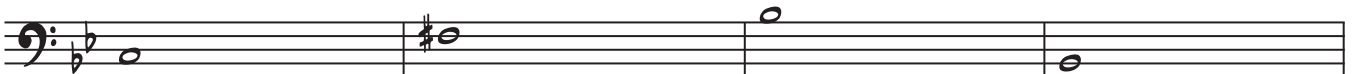


Amin^{7(b5)}

D7

Gmin⁶

Gmin⁶

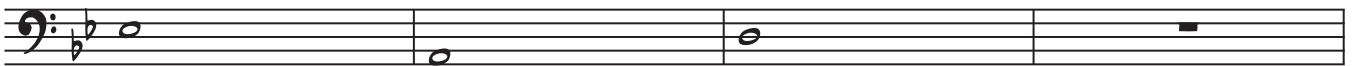


Cmin

F7

B^bmaj7

E^bmaj7



Amin^{7(b5)}

D7

Gmin

G^b7

Fmin7

E7

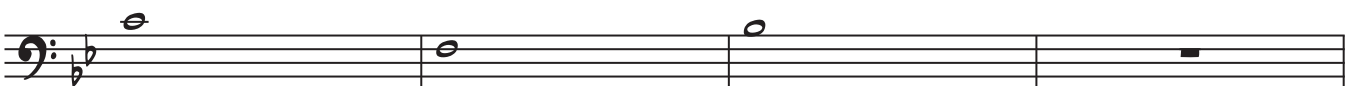


Amin^{7(b5)}

D7

Gmin⁶

Gmin⁶



1

Cmin

F7

B^bmaj7

E^bmaj7



Amin^{7(b5)}

D7

Gmin⁶

Gmin⁶



Cmin

F7

B^bmaj7

E^bmaj7



Amin^{7(b5)}

D7

Gmin⁶

Gmin⁶



Amin^{7(b5)}

D7

Gmin⁶

Gmin⁶



Cmin

F7

B^bmaj7

E^bmaj7



Amin^{7(b5)}

D7

Gmin

G^{b7}

Fmin⁷

E7



Amin^{7(b5)}

D7

Gmin⁶

Gmin⁶



Cmin

F7

B^bmaj7E^bmaj7Amin^{7(b5)}

D7

Gmin⁶Gmin⁶

Cmin

F7

B^bmaj7E^bmaj7Amin^{7(b5)}

D7

Gmin⁶Gmin⁶Amin^{7(b5)}

D7

Gmin⁶Gmin⁶

Cmin

F7

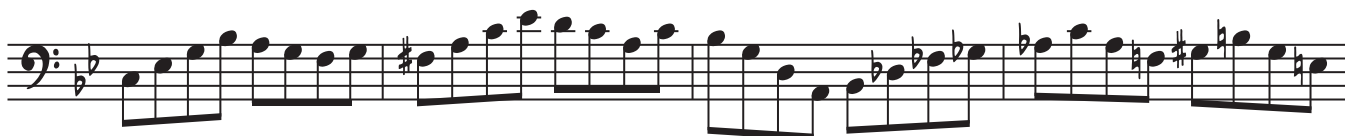
B^bmaj7E^bmaj7Amin^{7(b5)}

D7

Gmin

G^b7Fmin⁷

E7

Amin^{7(b5)}

D7

Gmin⁶Gmin⁶

AUTUMN LEAVES - JAZZ ETUDE

Dmin

G⁷

Cmaj⁷

Fmaj⁷

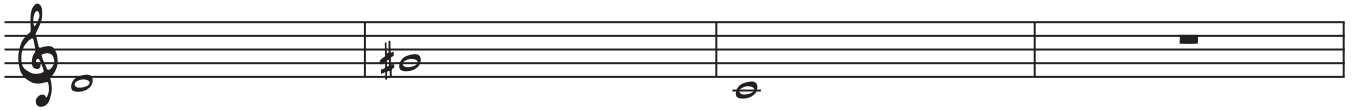


Bmin^{7(b5)}

E⁷

Amin⁶

Amin⁶



Dmin

G⁷

Cmaj⁷

Fmaj⁷



Bmin^{7(b5)}

E⁷

Amin⁶

Amin⁶



Bmin^{7(b5)}

E⁷

Amin⁶

Amin⁶



Dmin

G⁷

Cmaj⁷

Fmaj⁷



Bmin^{7(b5)}

E⁷

Amin

A^{b7}

Gmin⁷

F^{#7}



Bmin^{7(b5)}

E⁷

Amin⁶

Amin⁶



1

Dmin

G⁷

Cmaj⁷

Fmaj⁷



Bmin^{7(b5)}

E⁷

Amin⁶

Amin⁶



Dmin

G⁷

Cmaj⁷

Fmaj⁷



Bmin^{7(b5)}

E⁷

Amin⁶

Amin⁶



Bmin^{7(b5)}

E⁷

Amin⁶

Amin⁶



Dmin

G⁷

Cmaj⁷

Fmaj⁷



Bmin^{7(b5)}

E⁷

Amin

A^{b7}

Gmin⁷

F#⁷



Bmin^{7(b5)}

E⁷

Amin⁶

Amin⁶



2

Dmin

G⁷

Cmaj⁷

Fmaj⁷



Bmin^{7(b5)}

E⁷

Amin⁶

Amin⁶



Dmin

G⁷

Cmaj⁷

Fmaj⁷



Bmin^{7(b5)}

E⁷

Amin⁶

Amin⁶



Bmin^{7(b5)}

E⁷

Amin⁶

Amin⁶



Dmin

G⁷

Cmaj⁷

Fmaj⁷



Bmin^{7(b5)}

E⁷

Amin

A^{b7}

Gmin⁷

F#⁷



Bmin^{7(b5)}

E⁷

Amin⁶

Amin⁶



3

Dmin

G⁷

Cmaj⁷

Fmaj⁷



Bmin^{7(b5)}

E⁷

Amin⁶

Amin⁶



Dmin

G⁷

Cmaj⁷

Fmaj⁷



Bmin^{7(b5)}

E⁷

Amin⁶

Amin⁶



Bmin^{7(b5)}

E⁷

Amin⁶

Amin⁶



Dmin

G⁷

Cmaj⁷

Fmaj⁷



Bmin^{7(b5)}

E⁷

Amin

A^{b7}

Gmin⁷

F^{#7}



Bmin^{7(b5)}

E⁷

Amin⁶

Amin⁶



AUTUMN LEAVES - JAZZ ETUDE

Cmin F7 B^bmaj7 E^bmaj7

Amin^{7(b5)} D7 Gmin⁶ Gmin⁶

Cmin F7 B^bmaj7 E^bmaj7

Amin^{7(b5)} D7 Gmin⁶ Gmin⁶

Amin^{7(b5)} D7 Gmin⁶ Gmin⁶

Cmin F7 B^bmaj7 E^bmaj7

Amin^{7(b5)} D7 Gmin G^b7 Fmin7 E7

Amin^{7(b5)} D7 Gmin⁶ Gmin⁶

Cmin

F⁷B^bmaj⁷E^bmaj⁷Amin^{7(b5)}D⁷Gmin⁶Gmin⁶

Cmin

F⁷B^bmaj⁷E^bmaj⁷Amin^{7(b5)}D⁷Gmin⁶Gmin⁶Amin^{7(b5)}D⁷Gmin⁶Gmin⁶

Cmin

F⁷B^bmaj⁷E^bmaj⁷Amin^{7(b5)}D⁷

Gmin

G^b7Fmin⁷E⁷Amin^{7(b5)}D⁷Gmin⁶Gmin⁶

AUTUMN LEAVES - JAZZ ETUDE

Emin A⁷ Dmaj⁷ Gmaj⁷

C#min⁷(b5) F#⁷ Bmin⁶ Bmin⁶

Emin A⁷ Dmaj⁷ Gmaj⁷

C#min⁷(b5) F#⁷ Bmin⁶ Bmin⁶

C#min⁷(b5) F#⁷ Bmin⁶ Bmin⁶

Emin A⁷ Dmaj⁷ Gmaj⁷

C#min⁷(b5) F#⁷ Bmin B^{b7} Amin⁷ G#⁷

C#min⁷(b5) F#⁷ Bmin⁶ Bmin⁶

1

Emin

A⁷

Dmaj⁷

Gmaj⁷



C#min⁷(b5)

F#⁷

Bmin⁶

Bmin⁶



Emin

A⁷

Dmaj⁷

Gmaj⁷



C#min⁷(b5)

F#⁷

Bmin⁶

Bmin⁶



C#min⁷(b5)

F#⁷

Bmin⁶

Bmin⁶



Emin

A⁷

Dmaj⁷

Gmaj⁷



C#min⁷(b5)

F#⁷

Bmin

B^{b7}

Amin⁷

G#⁷



C#min⁷(b5)

F#⁷

Bmin⁶

Bmin⁶



Emin

A⁷Dmaj⁷Gmaj⁷C#min⁷(b5)F#⁷Bmin⁶Bmin⁶

Emin

A⁷Dmaj⁷Gmaj⁷C#min⁷(b5)F#⁷Bmin⁶Bmin⁶C#min⁷(b5)F#⁷Bmin⁶Bmin⁶

Emin

A⁷Dmaj⁷Gmaj⁷C#min⁷(b5)F#⁷

Bmin

B^{b7}Amin⁷G#⁷C#min⁷(b5)F#⁷Bmin⁶Bmin⁶

3

Emin

A⁷

Dmaj⁷

Gmaj⁷

C#min⁷(b5)

F#⁷

Bmin⁶

Bmin⁶

Emin

A⁷

Dmaj⁷

Gmaj⁷

C#min⁷(b5)

F#⁷

Bmin⁶

Bmin⁶

C#min⁷(b5)

F#⁷

Bmin⁶

Bmin⁶

Emin

A⁷

Dmaj⁷

Gmaj⁷

C#min⁷(b5)

F#⁷

Bmin

B^{b7}

Amin⁷

G#⁷

C#min⁷(b5)

F#⁷

Bmin⁶

Bmin⁶

JAZZ ETUDES AUTUMN LEAVES

The musical score for 'Autumn Leaves' is presented in ten staves, each with a treble clef and a 4/4 time signature. The music is written in G major. The chord progressions are as follows:

- Staff 1: D^{MIN}, G⁷, C^{MAJ}⁷, F^{MAJ}⁷
- Staff 2: B[°], E⁷, A^{MIN}⁶, A^{MIN}⁶
- Staff 3: D^{MIN}, G⁷, C^{MAJ}⁷, F^{MAJ}⁷
- Staff 4: B[°], E⁷, A^{MIN}⁶, A^{MIN}⁶
- Staff 5: B[°], E⁷, A^{MIN}⁶, A^{MIN}⁶
- Staff 6: D^{MIN}, G⁷, C^{MAJ}⁷, F^{MAJ}⁷
- Staff 7: B[°], E⁷, A^{MIN}, A^{b7}, G^{MIN}⁷, F^{#7}
- Staff 8: B[°], E⁷, A^{MIN}⁶, A^{MIN}⁶

The melodic lines consist of eighth and sixteenth notes, often with slurs and ties. The final staff concludes with a double bar line.

JAZZ ETUDES AUTUMN LEAVES

C^{MIN} **F⁷** **B^bMAJ⁷** **E^bMAJ⁷**

A^o **D⁷** **G^{MIN}⁶** **G^{MIN}⁶**

C^{MIN} **F⁷** **B^bMAJ⁷** **E^bMAJ⁷**

A^o **D⁷** **G^{MIN}⁶** **G^{MIN}⁶**

A^o **D⁷** **G^{MIN}⁶** **G^{MIN}⁶**

C^{MIN} **F⁷** **B^bMAJ⁷** **E^bMAJ⁷**

A^o **D⁷** **G^{MIN}** **G^{b7}** **F^{MIN}⁷** **E⁷**

A^o **D⁷** **G^{MIN}⁶** **G^{MIN}⁶**

JAZZ ETUDES AUTUMN LEAVES

The musical score for 'Autumn Leaves' is presented in 4/4 time with a key signature of two flats (Bb and Eb). The score consists of ten staves of music, each with a corresponding chord progression written above it. The chords are: Cmin, F7, BbMAJ7, EbMAJ7, A°, D7, Gmin6, Gmin6, Cmin, F7, BbMAJ7, EbMAJ7, A°, D7, Gmin6, Gmin6, A°, D7, Gmin6, Gmin6, Cmin, F7, BbMAJ7, EbMAJ7, A°, D7, Gmin6, Gb7, Fmin7, E7, A°, D7, Gmin6, Gmin6. The melody is written in treble clef with various rhythmic values including eighth, quarter, and half notes, as well as triplets. The piece concludes with a double bar line.

JAZZ ETUDES AUTUMN LEAVES

The musical score for 'Autumn Leaves' is presented in ten staves, each with a treble clef and a key signature of one sharp (F#). The time signature is 4/4. The chords are indicated above the notes. The first staff begins with an A minor chord and a D7 chord. The second staff features F# diminished, B7, E minor 6, and E minor 6 chords. The third staff starts with A minor and D7, followed by G major 7 and C major 7. The fourth staff includes F# diminished, B7, E minor 6, and E minor 6. The fifth staff has F# diminished, B7, E minor 6, and E minor 6. The sixth staff begins with A minor and D7, then G major 7 and C major 7. The seventh staff contains F# diminished, B7, E minor, E flat 7, D minor 7, and C7. The eighth staff features F# diminished, B7, E minor 6, and E minor 6. The score concludes with a double bar line.