

MACK THE KNIFE

www.jazzetudes.net

Darren Lloyd

①

B♭6 Cm

5 F7 B♭6

9 Gm7 Cm7

13 Cm7 Cm7 F7 B♭6 Cm7 F7

②

B♭6 Cm

Squeeze

21 F7 B♭6

25 Gm7 Cm7

29 Cm7 Cm7 F7 B♭6 Cm7 F7

The image shows a bass clef musical score for the piece 'Mack the Knife'. It is written in 4/4 time and features two systems of music, each starting with a circled number (1 and 2). The key signature has two flats (Bb and Eb). The first system (1) contains measures 1 through 12, with a final measure that is a whole rest. The second system (2) contains measures 13 through 32, also ending with a whole rest. Chord symbols are placed above the staff at various points: Bb6, Cm, F7, Gm7, and Cm7. There are also trills and triplets indicated. A 'Squeeze' instruction is placed below the staff between measures 18 and 19. The score is written on a single staff with a bass clef.

MACK THE KNIFE

3

Bb6

Cm



37

F7

Bb6



41

Gm7

Cm7



45

Cm7

Cm7

F7

Bb6

Cm7

F7



4

Bb6

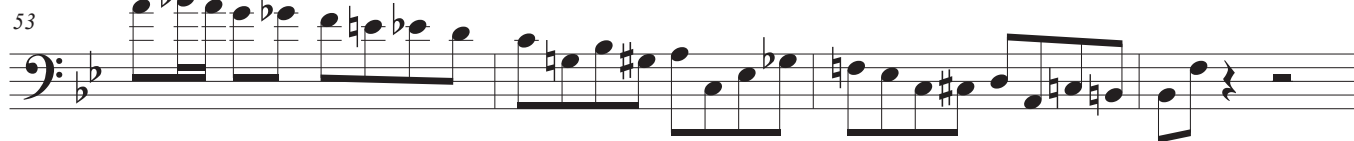
Cm



53

F7

Bb6



57

Gm7

Cm7



61

Cm7

Cm7

F7

Bb6

Cm7

F7

Bb6

