

Bass clef

MINOR II - V - I

A

D_m7(^b5) G7(^b9) C_m

B $D_m7(b5)$ $G7(b9)$ C_m

Figure 1 shows the musical notation for the bass line of "The Sound of Silence" in F major. The notation is written on a single staff in bass clef. The key signature has one flat (Bb). The tempo is marked "Moderato". The notation includes a variety of note values, including eighth and sixteenth notes, and rests. The bass line is divided into measures by vertical bar lines. The first measure contains a whole rest. The second measure contains a triplet of eighth notes. The third measure contains a half note. The fourth measure contains a half note. The fifth measure contains a half note. The sixth measure contains a half note. The seventh measure contains a half note. The eighth measure contains a half note. The ninth measure contains a half note. The tenth measure contains a half note. The eleventh measure contains a half note. The twelfth measure contains a half note. The thirteenth measure contains a half note. The fourteenth measure contains a half note. The fifteenth measure contains a half note. The sixteenth measure contains a half note. The seventeenth measure contains a half note. The eighteenth measure contains a half note. The nineteenth measure contains a half note. The twentieth measure contains a half note. The notation is labeled with "F" in a box at the beginning, "Dm7(b5)" above the first measure, "G7(b9)" above the fifth measure, and "Cm" above the ninth measure. The tempo marking "Moderato" is written below the staff.

MINOR II - V - I

2 D_m7(b5)

G₇(b9)

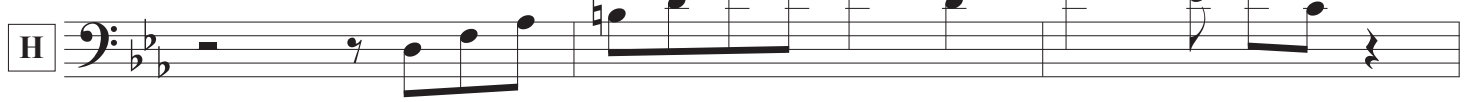
C_m



D_m7(b5)

G₇(b9)

C_m



D_m7(b5)

G₇(b9)

C_m



D_m7(b5)

G₇(b9)

C_m



D_m7(b5)

G₇(b9)

C_m



D_m7(b5)

G₇(b9)

C_m

